

SHERP N 1200



OBSTACLES DO NOT BLOCK THE PATH, THEY ARE THE PATH!



Projecton
Technology

455 Dimokratias Avenue,
Perama Greece
Tel: ++30-215 5350292
info@projecton.gr
www.projecton.gr

QUADRO INTERNATIONAL LLC
Ukraine, Kyiv
Stolychne Shosse street, bld. 100
info.global@sherp.ua
WWW.SHERPGLOBAL.COM



SHERP N 1200



OBSTACLES DO NOT BLOCK THE PATH, THEY ARE THE PATH!

SPECIFICATIONS

BODY

Type	Hardtop
Material	Steel (frame and bottom, hot dripped galvanized) and aluminium (cabin)

CABIN

Internal volume	2 m ³
Rear space internal volume	5,8 m ³
Overall internal volume	7,8 m ³

PERFORMANCE

Payload	1200 kg (2640 lb)
Passengers	9 (including a driver)
Towing capacity	2350 kg (5 181 lb)
Maximum speed on land	40 km/h (25 mph)
Maximum speed on water	6 km/h (3.7 mph)
Gradeability	35°
Tilt	30°
Internal turning radius	2.5 m
External turning radius	8.0 m
Dry vehicle weight	2400 kg (5291lb)
Ground pressure	0.07–0.15 kg/cm ² (0.9–2.1 lb/in ²)

SAFETY FEATURES

A low center of gravity decreases the rollover risk
The body design includes integrated ROPS made of steel
Rear-view camera
The driver's and passengers' seats are equipped with adjustable two-, three-, and four-point seatbelts

CONTROLS

Steering Friction Mechanism
Display - color

DIMENSIONS

Height with a/c on inflated tires	3028 mm (119.2 in)
Height without a/c on inflated tires	2825.5 mm (112.3 in)
Length	4,002 mm (157 in)
Width	2,520 mm (99 in)
Ground clearance	600 mm (23 in)
Wheelbase	2,118 mm (83 in)

TRANSMISSION

Type	mechanical
Final drive	chain drive

BRAKES

Brakes	hydraulic dual caliper/ dual disc
Parking brake system	handbrake

WARRANTY

1000 m/h or 2 year (whichever comes first)
Maintenance interval - 250 hours (first 50 hours)

TIRES

Size	1800x600x25 (71x23x25in)
Type	Tubeless, extra-low pressure

FUEL SYSTEM

Fuel tank volume	95 L (25 gal)
Capacity of additional fuel canisters	4 x 58 L (15 gal)
Fuel consumption	5 - 8 l/h (1.3-2.1 gal/h)
Average fuel autonomy	to drive more than 61 hours of autonomy and 14 hr non-stop running just with main fuel tank

ELECTRICAL

Voltage	12 V
Generator Performance	140 A
Cold Cranking Amps	2*800 CCA
Battery type	Lead Acid

ENGINE

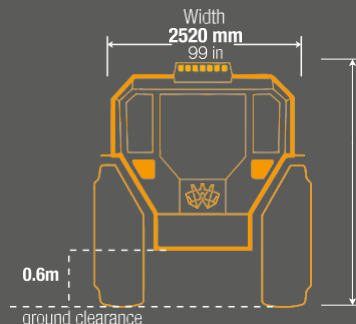
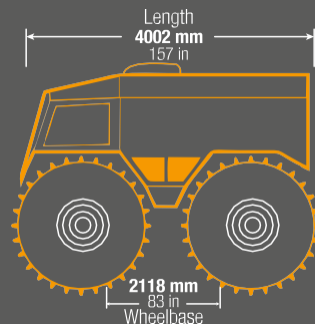
Model	Doosan D18
Fuel type	diesel
Emission control	Stage 5 /Tier-4-final
Number of cylinders	3
Engine DOC (Diesel Oxidation Catalyst)	DOC+DPF/DOC only
Engine displacement	1.8 L
Max engine power	41 kW (55 hp)
Max engine torque	190 Nm
Gearbox	manual, 6-speed

BASE MODEL INCLUDES:

Cabin and passenger module ROPS
3-point seatbelts for driver and passengers
Backup battery
Glove boxes and cup holders
Rear view camera
Under floor storage boxes
LED hi-beam and low-beam
Additional fuel tank rims
Towing hitch integrated in front and rear bumpers
Autonomous heater
Integrated front and rear footboards
Preparing for A/C
CORDURA® fabric interior cover
Operator & Maintenance manual

OPTIONS

Additional rear LED lights 2 pcs
Front LED roof light bar
Back seats with 4-points adjustable seatbelts 2 pcs
Back seats with 4-points adjustable seatbelts 4 pcs
Back seats with 2-points adjustable seatbelts 7 pcs
Baggage rack
Overhead lockers -2 pcs W x H x L 460 x 320 x 2350 mm
Interior cover (eco-leather)
Air-conditioner
Winchincl. mounting
GPS speedometer
Customized painting / wrapping
BODY OPTIONS:
Hard top
2 side windows
4 side windows
INTERIOR OPTIONS:
No seats / cargo
2 back seats
4 back seats
7 back seats
UNIVERSAL CARGO TRAILER:
Dry weight - 600/630 kg (1322lb/1388lb)
Loading capacity - 650/900 kg (1433lb/1984lb)
Internal volume - 3400L/5800L (898gal/1532gal)



Height with a/c on inflated tires 3028 mm (119.2 in)
Height without a/c on inflated tires 2825.5 mm (112.3 in)

